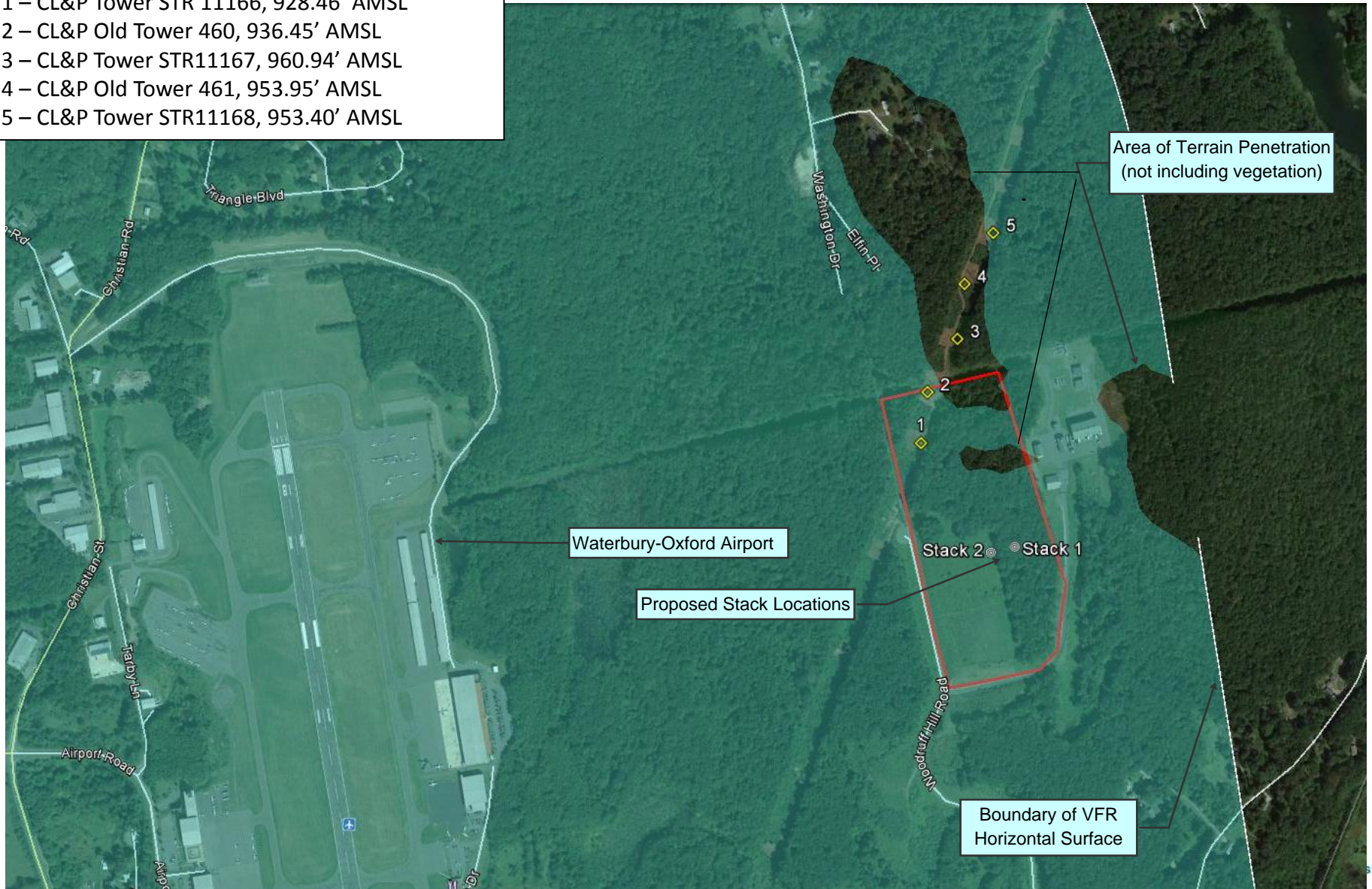


Existing Penetrations

- 1 – CL&P Tower STR 11166, 928.46' AMSL
- 2 – CL&P Old Tower 460, 936.45' AMSL
- 3 – CL&P Tower STR11167, 960.94' AMSL
- 4 – CL&P Old Tower 461, 953.95' AMSL
- 5 – CL&P Tower STR11168, 953.40' AMSL



Area of Terrain Penetration
(not including vegetation)

Waterbury-Oxford Airport

Proposed Stack Locations

Stack 2 Stack 1

Boundary of VFR
Horizontal Surface